



THE FIRST CONNECT

Issue - 4 Oct 2025-Mar 2026



*YOUR PARTNER IN
PROGRESS* 

- 3** *Strengthening New Product Development at Cosmos*
- 5** *Industrial Visits @ Techpark*
- 6** *Cosmos Business Excellence Initiative*
- 8** *Honouring a Life of Leadership*
- 10** *Workplace Efficiency & Safety
People, Values & Responsibility*
- 12** *Market Presence & Customer Engagement*
- 14** *Upcoming Exhibitions*

Preface

Past two quarters marked an important phase in Cosmos' journey one defined not only by progress in systems and capabilities, but also by reflection, learning, and shared purpose. Across innovation, operational excellence, workplace practices, and market engagement, our collective efforts remained focused on building foundations that support sustainable growth and long-term value.

This edition of First Connect offering brings together stories of that progress. It reflects the commitment of our teams in strengthening new product development, adopting structured problem solving, and continuously improving the way we work.

Alongside these initiatives, there has been a conscious emphasis on creating a workplace that values respect, responsibility, and care for people—recognizing that true excellence is built when systems and culture grow together.

This issue also carries a deeper note of remembrance. We pause to honour the life and leadership of our Director, whose presence shaped not only the direction of the organization, but the character of its culture. Known for his humility, clarity of thought, and belief in people, he led by example quietly, consistently, and with purpose. His principles for success continue to guide us, reminding us that leadership is measured as much by compassion and integrity as by achievement.

As we move forward, the initiatives and reflections shared in this edition stand as a collective expression of who we are and what we aspire to become. Guided by strong values, inspired by meaningful leadership, and driven by purpose, we continue our journey of engineering progress together.

FROM INSIGHT TO INNOVATION: STRENGTHENING NEW PRODUCT DEVELOPMENT AT COSMOS

From Concept to Customer Experience



At Cosmos, New Product Development goes beyond machine design. It begins with a deep understanding of real manufacturing challenges and translates those insights into robust, high-performance solutions that deliver consistent results on the shop floor.

As customer expectations continue to evolve toward higher precision, greater productivity, and long-term reliability, we are strengthening our NPD capabilities to engineer advanced, heavy-duty CNC machines. Our focus remains on building scalable, future-ready platforms that enhance customer experience, support operational excellence, and reinforce Cosmos' position as a technology-driven machine tool manufacturer.

Expanding Techpark-II: A Dedicated Space for New Developments

To support this vision, Cosmos is expanding **Techpark-II**, our dedicated hub for New Product Development and advanced engineering. This expansion will play a key role in shaping how future machine platforms are conceived, designed, tested, and refined particularly as we move toward more advanced and high-capacity CNC solutions.

Techpark-II brings together teams from **design, applications, manufacturing, quality, and service** under one roof. From early-stage ideation to prototype build and validation, close collaboration ensures that every new development is practical, reliable, manufacturable, and aligned with real customer applications.



Structured brainstorming sessions, focused design reviews, and early feasibility studies help validate concepts at the right stage and eliminate unnecessary complexity before production. This disciplined yet collaborative approach ensures clarity, purpose, and real-world usability resulting in machines that deliver consistent shop-floor performance and a superior customer experience.

Engineering Heavy Machines with a Practical Focus

Developing large, high-capacity CNC machines demands strong engineering fundamentals, precise execution, and a deep understanding of real shop-floor conditions. At Cosmos, every new development is evaluated not only for performance, accuracy, and structural integrity, but also for critical practical aspects such as:

- Ease of operation and operator ergonomics
- Accessibility for maintenance and service
- Long-term reliability under demanding working conditions
- Optimized total cost of ownership across the machine lifecycle



Megamill M2218



YCL 1000

Our objective is clear: to engineer robust machines that deliver consistent performance, remain easy to operate and maintain, and continue to create value for customers throughout their entire operating life.

Experience Centre: Closing the Loop Through Customer Feedback

To further strengthen customer engagement and confidence, Cosmos has established a dedicated **Experience Centre** that brings a wide range of CNC machines under one roof. This space enables customers to see, understand, and experience Cosmos solutions in a focused and immersive environment.

Customers can closely examine machines, understand design philosophy and performance capabilities, and engage in detailed discussions with application and sales teams. This hands-on exposure simplifies evaluation and ensures strong alignment between customer expectations, application needs, and machine performance.



Insights gathered through customer visits, live demonstrations, and in-depth discussions are systematically captured and shared with engineering teams. By closing the loop between customer experience and product development, Cosmos creates a continuous cycle of improvement—ensuring machines evolve in line with real-world requirements and deliver increasing value over time.

INDUSTRIAL VISITS @ TECHPARK

Bridging Academia with Industrial Visit at Techpark

Around 15 students and faculty members from **Thakur College of Engineering & Technology** visited **Cosmos Techpark** on 17th January 2026 for practical industry exposure. The visit included an overview of the company, advanced manufacturing processes, organizational operations, and management vision, followed by a technical briefing on CNC machine manufacturing.



Through the technical sessions and plant visit, students observed various stages of production, quality standards, material handling processes, and precision engineering practices, gaining valuable insights into real-time manufacturing operations. The visit reflected Cosmos' continued commitment towards industry-academia collaboration and knowledge sharing.



OPERATIONAL EXCELLENCE & SYSTEMS

Sustainable performance is built on strong systems. Through structured problem-solving frameworks, quality initiatives, and continuous improvement practices, Cosmos continues to embed operational excellence into everyday decision-making.

Cosmos Business Excellence Initiative



With the objective of achieving higher organizational performance and operational maturity, Cosmos is introducing the **Cosmos Business Excellence** initiative across the organization.

This framework is designed to serve as a unified platform to understand, standardize, and improve every process involved in our daily operations.

Cosmos Business Excellence will enable teams to identify improvement opportunities, enhance process clarity, and align individual and departmental efforts with the organization's overall goals. Through this initiative, we aim to strengthen performance consistency, drive continuous improvement, and build a robust foundation for sustainable growth.

7 QC Tools & Problem-Solving Training

To reinforce Cosmos' commitment to quality excellence, a focused training session on 7QC Tools and Problem Solving Techniques was conducted for employees. The program aimed to build a strong understanding of fundamental quality methodologies, equipping participants to identify issues accurately, analyze root causes systematically, and contribute effectively to continuous improvement initiatives.

Through practical examples and real-work scenarios, the session enhanced employees' ability to apply data driven insights in their decision making. The learning experience empowered teams to improve process reliability, reduce errors, and support overall operational efficiency.

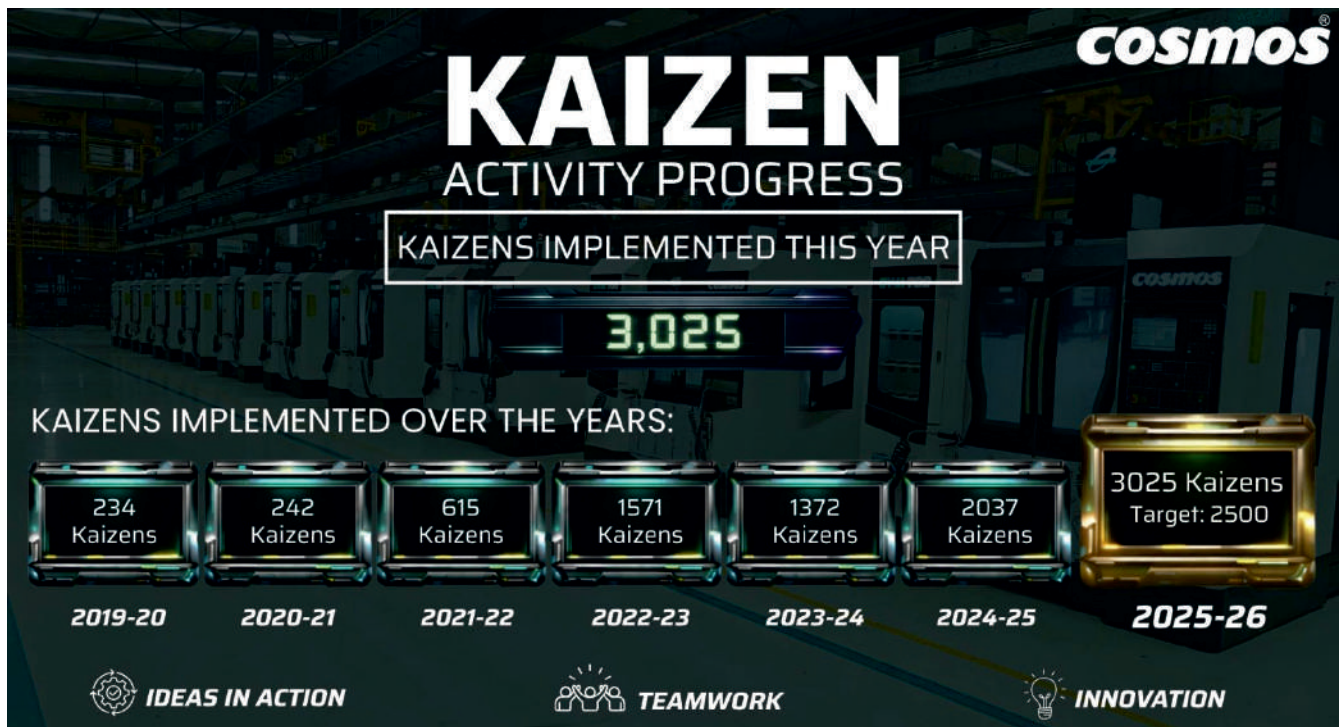


Kaizen - 3025 Ideas | One Culture of Continuous Improvement

We are proud to celebrate a remarkable milestone of **3025 Kaizens** achieved in the year 2025-26.

Each Kaizen represents an idea transformed into action, contributing towards enhanced productivity, quality, safety, efficiency, and smarter workplace practices.

This achievement is a testament to the collective spirit, innovation mind-set, and proactive approach of every team member who continuously strives to make processes better every day. Together, these small improvements have created a significant organizational impact, driving Cosmos further on its journey of operational excellence and sustainable growth.



ACHIEVEMENTS AND RECOGNITIONS

GreenCo Gold Achievement - Committed to a Greener Future



Cosmos Engitech Pvt. Ltd. proudly achieved the **prestigious GreenCo Gold Rating** from the Confederation of Indian Industry - Sohrabji Godrej Green Business Centre - a significant recognition of our commitment towards sustainable manufacturing and environmentally responsible operations.

This achievement reflects the visionary leadership of our director Nimish Shah and the collective efforts of the entire team towards driving operational excellence through energy efficiency, resource

conservation, and greener manufacturing practices. Together, we continue to move towards building a more sustainable future.



Mr. Nimish Shah

15.7.1962 - 27.11.2025

Today, we pause to remember a visionary, a leader, and a guiding light **Mr. Nimish Shah**. His passion, dedication, and unwavering integrity shaped not only Cosmos Impex, but the lives of everyone who had the privilege to know him.



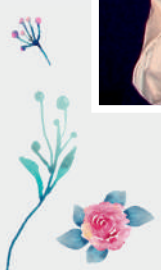
THE ERA THAT BUILT OUR CULTURE

Since the early years of Cosmos, he stood alongside Mr. Nagesh with quiet determination, building a dream with sincerity, hard work, and a belief in doing things the right way.



HIS LEADERSHIP

He led with calm confidence, kindness, and a steady guiding presence that inspired people and made them feel encouraged and supported.





THE PERSON HE WAS

He was a humble, thoughtful, and caring human being who touched lives through his sincerity, warmth, and the gentle way he connected with people.



IN HIS MEMORY OF WE HONOUR.....

HIS VISION

HIS LEADERSHIP

HIS PRINCIPLES

HIS DISCIPLINE

HIS INTEGRITY

HIS COMMITMENT

HIS HUMILITY

HIS WISDOM

HIS QUIET STRENGTH

HIS LEGACY

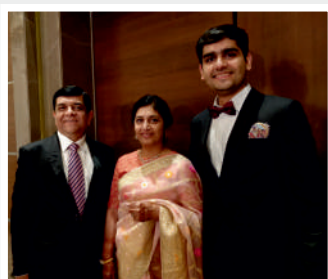
HIS JOURNEY

HIS IMPACT



HIS LEGACY

His values, his spirit, and the culture he helped shape continue to guide Cosmos every day and remain a lasting part of who we are.



A DEDICATED FAMILY MAN

Beyond his professional excellence, he was a dedicated family man; gentle, grounded, and guided by gratitude.



THANK YOU, NIMISH SIR!

For your grace, your goodness, and your guidance. You will always remain in our hearts.
Om Shanti.



WORKPLACE EFFICIENCY & SAFETY

By integrating ergonomics into daily operations, Cosmos continues to build a safer and more efficient working environment that supports long-term sustainability.

Ergonomics Awareness Month

In line with our focus on employee well-being and safety, **December 2025** was observed as “**Ergonomics Awareness Month**” at Cosmos.

The initiative aimed to enhance awareness and improve ergonomic practices across various manual activities carried out in our processes.

As part of the **Cosmos Care** initiative, activities were conducted to educate employees on correct posture, safe material handling, workstation alignment, and methods to reduce physical strain and fatigue. His continuous effort reflects our priority toward employee health, comfort, and long-term productivity, reinforcing a safer and more supportive workplace culture.



PEOPLE, VALUES & RESPONSIBILITY

Such initiatives strengthen organizational culture by reinforcing trust, accountability, and mutual respect.

POSH Training Program

As part of our dedication to fostering a safe, respectful, and inclusive work environment, a comprehensive POSH awareness program was conducted for employees. The session provided clarity on the Prevention of Sexual Harassment (POSH) Act, including its key provisions, types of workplace harassment, and the structure and functioning of the Internal Committee. Participants also learned about reporting mechanisms, preventive measures, and the shared responsibilities of employees and employers in maintaining a harassment free workplace.

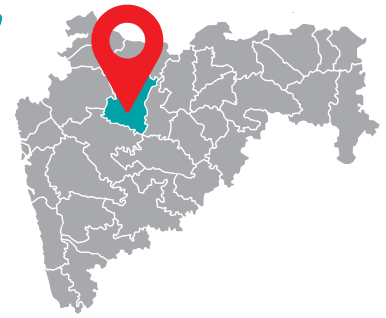
The training strengthened our collective understanding and emphasized the organization's firm stance on zero-tolerance towards any form of misconduct, reinforcing a culture built on dignity and mutual respect.



A STEP FORWARD IN SERVING OUR CUSTOMERS BETTER

Another milestone in **Cosmos' growth journey**, the opening of our new office in

Sambhaji Nagar



This expansion marks a significant step in strengthening our service network and reinforcing our commitment to being closer to our customers. With a dedicated presence in the region, we are better positioned to respond faster, engage more closely, and provide timely, effective support that enhances machine uptime and operational efficiency.

The **Sambhaji Nagar office** reflects our continued focus on long-term **partnerships, reliable service, and manufacturing excellence**. As Cosmos grows, our priority remains unchanged: enabling our customers to perform better through proximity, responsiveness, and trust.

Another Milestone - Precision Engineering Park (PRECIPARK) Groundbreaking

Cosmos Engitech Pvt. Ltd. marked a significant milestone with the auspicious Bhoomi Pujan ceremony for its upcoming manufacturing facility, symbolizing continued growth, innovation, and commitment towards excellence. The expansion marks the development of a dedicated precision component manufacturing unit with larger infrastructure, enhanced manufacturing capabilities, and a stronger focus on delivering high-precision engineered components for evolving industry requirements.



MARKET PRESENCE & CUSTOMER ENGAGEMENT

Across key industry platforms including **Engimach 2025**, **Jamnagar Tech Fest 2026**, **MASSIA Advantage Maharashtra Expo 2026** & **MachAuto Expo 2026**, Cosmos engaged closely with customers, partners, and industry professionals focusing on real-world manufacturing challenges, productivity, and evolving application needs.

With a comprehensive range of machining solutions and digital capabilities like DigiFAC & Zenez were showcased, the emphasis remained on meaningful interactions—understanding requirements, exchanging insights, and aligning solutions to support long-term growth.

These engagements collectively reinforced Cosmos' position as a trusted, technology-driven partner committed to delivering dependable, solution-oriented support.

Engimach 2025 - Gandhinagr, Gujarat



Driving conversations on productivity and real-world manufacturing challenges

Jamnagar Tech Fest 2026, Gujarat



Showcasing connected manufacturing and intelligent control

MASSIA Advantage Maharashtra Expo 2026 - Ch.Sambhajinagar, Maharashtra



Strengthening regional engagement and deepening customer connect

MachAuto Expo 2026 - Ludhiana, Punjab



Known as one of India's prominent industrial hubs, Ludhiana provided the perfect platform to connect with the region's strong manufacturing and engineering ecosystem.

**Consistent
Presence**

**100+
Interactions**

**Pan-India
Engagement**

UPCOMING EXHIBITIONS

cosmos[®]

invites you to visit at

inter



2026

4-8 June Hall C | Booth 25

*Precision Machining Solutions to Enhance
Productivity & Performance Across Industries.*

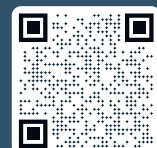
VTL CVM SM TM



**Meet Our Experts
Discuss Your Requirements**



**CODISSIA Trade Fair Complex,
G.V. Fair Grounds, Avinashi Road, Coimbatore.**



cosmos.in

cosmos[®]

invites you to

Experience Advanced CNC Solutions for Precision,
Productivity & Consistency

@



16-18 July, 2026

Hall 1 | Booth S3 & S5



TM Series

CVM Series

SM Series



Texpo Park, Sidco industrial estate,
Thirumudivakkam, Chennai.

amtex[®]
ASIAN MACHINE TOOL EXHIBITION

24-27 July, 2026

Hall 11 | Booth No : F-7



India Expo Mart, Greater Noida



Precision
Engineering



High
Productivity



Reliable
Performance



Consistent
Results

We look forward to welcoming you at both exhibitions.

Visit us. Discover more.

For more information kindly contact

+91 74878 88992 India@cosmos.in



cosmos.in

Global Presence



YOUR PARTNER IN
PROGRESS 

Corporate Office

Cosmos House, Plot No. 85/2, Padra Road, Atladara, Vadodara, Gujarat - 390 012

Manufacturing Facilities

Plant - I

Cosmos Impex (India) Pvt. Ltd., Plot No. 847, 848 Village Ranu, Ta. Padra, Vadodara, Gujarat - 391 445

Plant - II

Plot No. 68-B, Sigil Compound, Padra Road, Atladara, Vadodara, Gujarat - 390 012

 **0265 6127000**  **+91 7487888992**  **sales@cosmos.in**